



ATELIER LEK

ONAFHANKELIJK LICHTONTWERP

V H A V E N

ATELIER LEK

ONAFHANKELIJK LICHTONTWERP

- lighting concept
- sustainable lighting design
- Integrated design
- technical design

Atelier LEK

The Rotterdam-based lighting design company Atelier Lek is a Dutch, experienced company with a long track record in The Netherlands as well as international. Our practice finds its strength in an approach of conceptuality and practicality, large and small-scale, urban and architectural. We are intrigued by diversity in (public) space, integrated sustainable solutions and in understanding and steering the project processes that are invariably the driving force behind projects.

Our ultimate goal is to make things. Our business model is set up flexibly, to merge the experience and momentum of large design assignments with the fresh joie de vivre of an exploring attitude. In this set-up the network is everything. As a result, there is an enormous reservoir of specialist knowledge and consulting specialists is available when necessary.

Atelier LEK has a proven track record with both won, designed and building several big masterplans: the award winning Arnhem Central Station; Masterplan Nieuw Bergen; Coolhaven Masterplan and several streets and bridges in Rotterdam. A sensitive approach to cultural and architectural heritage is part of the history of LEK. The masterplan for the historical city of Schiedam

is a great example of a successful project within a historical heritage conservation area.

Stakeholder involvement is a large part of the approach taken by both LEK. Integrated project processes with workshops and presentations are essential to delivering a quality product. The project in Schiedam, the **historical heritage conservation area** has been accomplished by taking the municipality and other stakeholders on a walk and test-workshop to see the positive effects of our lighting design on their urban and architectural history.

Finance or fundraising comes naturally with stakeholder involvement for the team. Getting a big support base involved is what keeps projects going. Through public events, workshops, and social media our projects reach the stakeholders, and they are able to spread the enthusiasm.

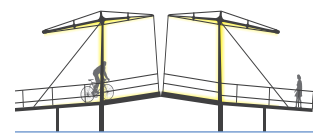
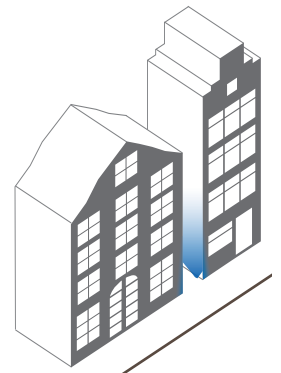
All the projects of Atelier LEK are embedded in the public space and belong to the community. This means that all our projects are, without exception, enjoyed by the public.

Historical Citycenter Masterplan, ongoing Schiedam, Netherlands, 2015

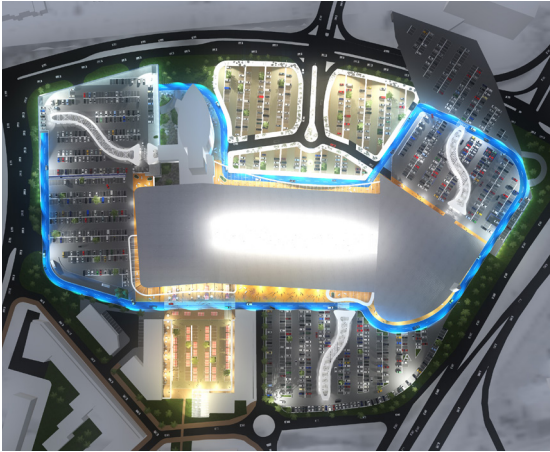


- Routing over the historic canal and connecting to the main shopping street
- Illuminating the historic high-lights along the canal
- Connecting the routes through intuitive lighting incentives in the alley's.

Location: Schiedam, NL
Site: 6km
Program: Lighting design for public space and facades
Client: City of Schiedam
Process: ongoing
Design: LEK, jvantspijker
Status: ongoing



Smaralind Mall Masterplan Reykjavik, Iceland, 2015, ongoing



- Rebranding the mall as a hybrid of shopping and experience
- High tech design
- Car friendly mall through clear car routing
- Pedestrian friendly parking flatscapes and garages by design of buildings, canopies and lighting
- Integrated landscape, urban and lighting design for the mall, parking and routing

Location: Smaralind Mall, Kópavogur, Iceland
Site: 12 ha
Program: 2400 parking spaces, two parking buildings, adjacent housing masterplan
Client: Smaralind Mall / Reginn
Process: Commission, ongoing
Design: jvantspijker, LEK, Felixx
Status: 2014 masterplan phase, 2015 detailed design; ongoing
Lighting Design: Atelier LEK



The masterplan revolves around a guiding blue-lit road, canopies and a new exposure outward through lighting and facade design



Interplay between facade, canopy, lighting and parking



New ITS car guiding system



The blue "loop"



Experience throughout the parking



ARNHEM CENTRAL STATION

CITY OF ROTTERDAM



ARNHEM CENTRAL STATION



ATELIER LEK

ONAFHANKELIJK LICHTONTWERP



- **Arnhem Central Station**
- **Location:** Arnhem, (NL)
- **Site:** 4,1 ha
- **Program:** Integral lighting design for the public space surrounding the new public transport hub
- **Visitors:** 110.000+ transfers daily
- **Client:** Gemeente Arnhem
- **Project design:** 2010 - 2016
- **Execution:** 2010-2016
-
- **WINNER A+ award**
- **WINNER Heuvelink award**

- Fluid guidance of different traffic flows - Cars, busses, cyclists and pedestrians
- Lighting guides and enhances the fluid architectural design to emphasize its characteristics
- Metamorphoses from modest station was restructured into an eye-catching project with corresponding lighting design
- Open connection between the transfer building and busstation with the city centre.
- Lighting integrated in landscape, architecture and street furnishings.
- Lighting design stresses the iconic identity of the Station area.



- Lighting plan gently accommodates the passenger in their process of wayfinding.
- The urban plan combined with the lighting scheme creates an environment where each mode of transport has a clear allocated space, each with specific light-



- The lighting of the entrance from the kantorenplein to the OV terminal is also part of the urban lighting scheme. The directional downlights ensure a fluent



- Custom made spots are integrated in the railing, fences and on the light-poles



- Multidisciplinary cooperation on the scale of the city and in detail.
- Co creating with architect, landscape architects, technicians, municipality and contractors.



CITY OF ROTTERDAM

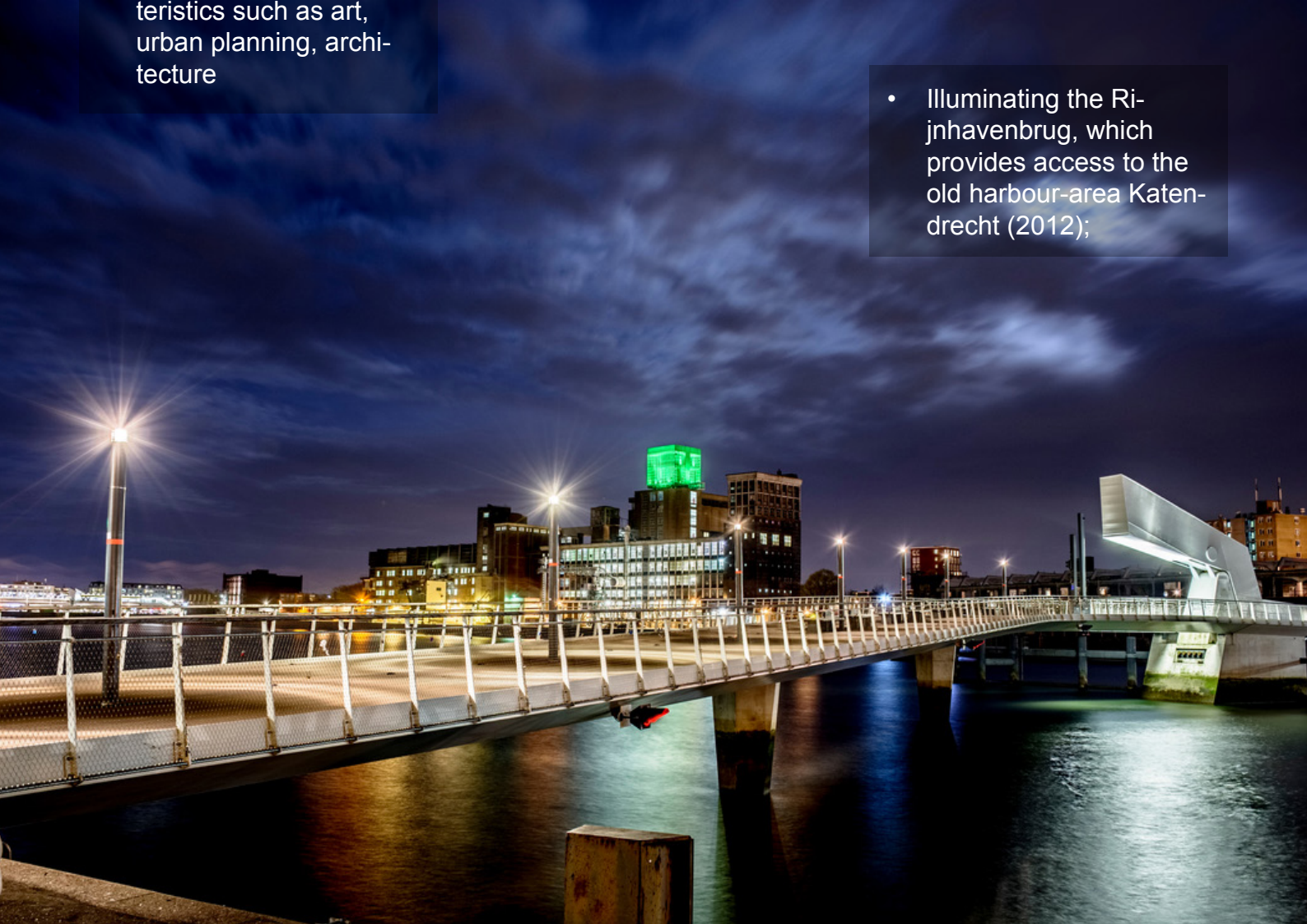
- Focus in the lighting vision is an integrated lighting plan which incorporates public space and adjacent objects and facade lighting, and communicating with all stakeholders during the whole process;
- Knowledge of the local- and NEN regulations/ norms is basis for formulating the right requirements for an urban space (lux levels and contrast levels) and façade-lighting (avoiding glare and considering dark sky requirements)



- Illuminating the diverse architectural identities in their own quality, each site and building requires a different approach
- Art which is sometimes hidden in the dynamic cityscape during the day is lifted up from the darkness by a custom made lightingplan (Zadkine, Phoenix);
- Creating more coherence and atmosphere in the nightscape on the 'City Axis' and surrounding areas. This project consisted of several illumination projects, such as the City hall, the fountain and the harbour museum (2012)
- Accentuate qualities and authentic characteristics such as art, urban planning, architecture

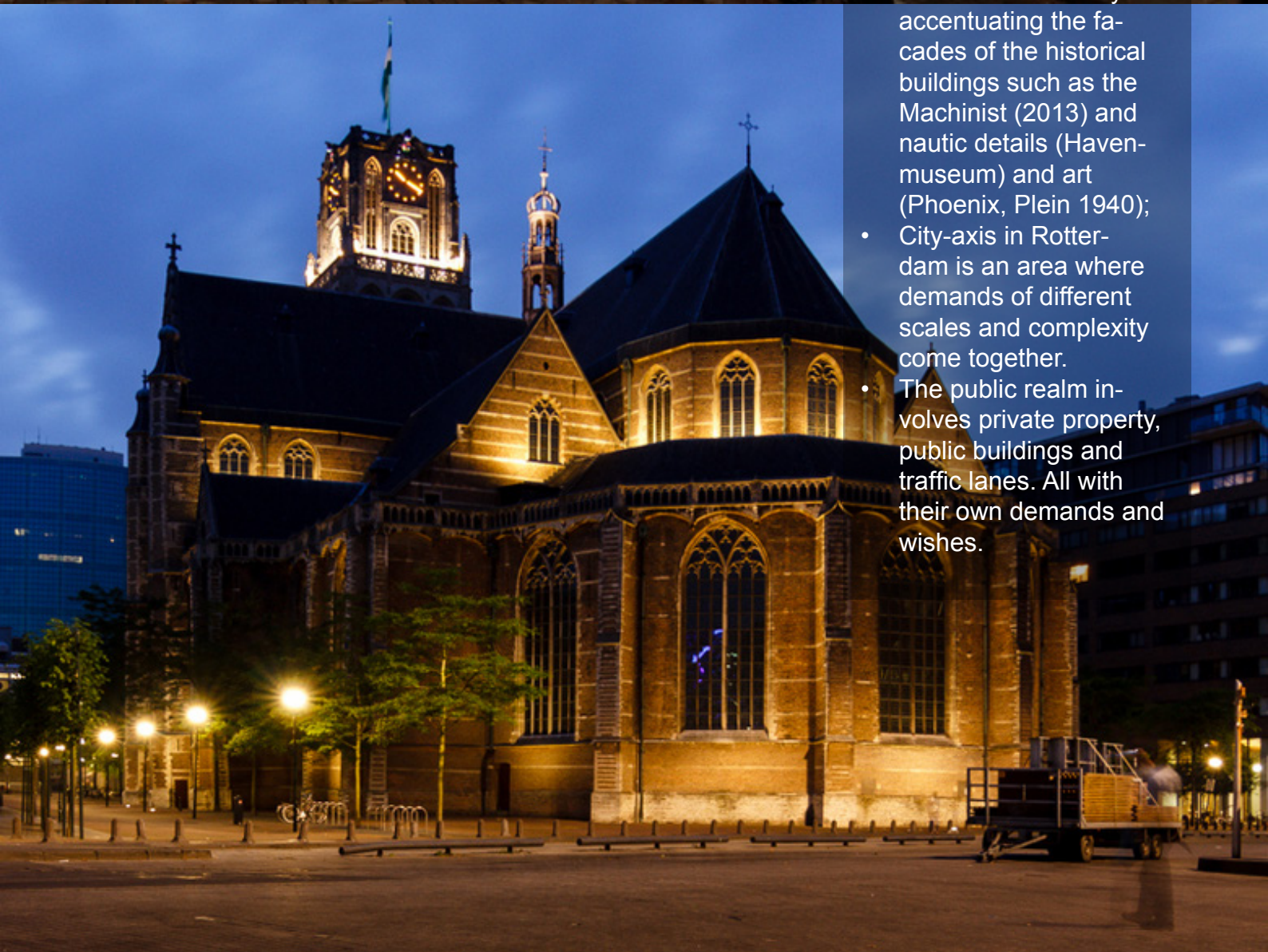


- Illuminating the Rijnhavenbrug, which provides access to the old harbour-area Katendrecht (2012);

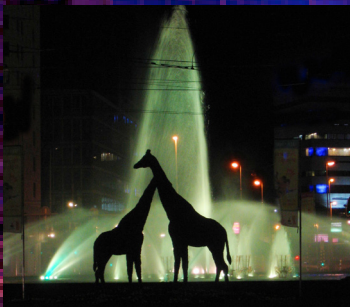




- Lighting vision for the 3 surrounding neighbourhoods of the city-axis (2013);
- Creating an attractive pedestrian routes along the waterfront (De Boeg, Havenmuseum), to the old harbour (Oude Haven) and over Coolhaveneiland by accentuating the facades of the historical buildings such as the Machinist (2013) and nautic details (Havenmuseum) and art (Phoenix, Plein 1940);
- City-axis in Rotterdam is an area where demands of different scales and complexity come together.
- The public realm involves private property, public buildings and traffic lanes. All with their own demands and wishes.

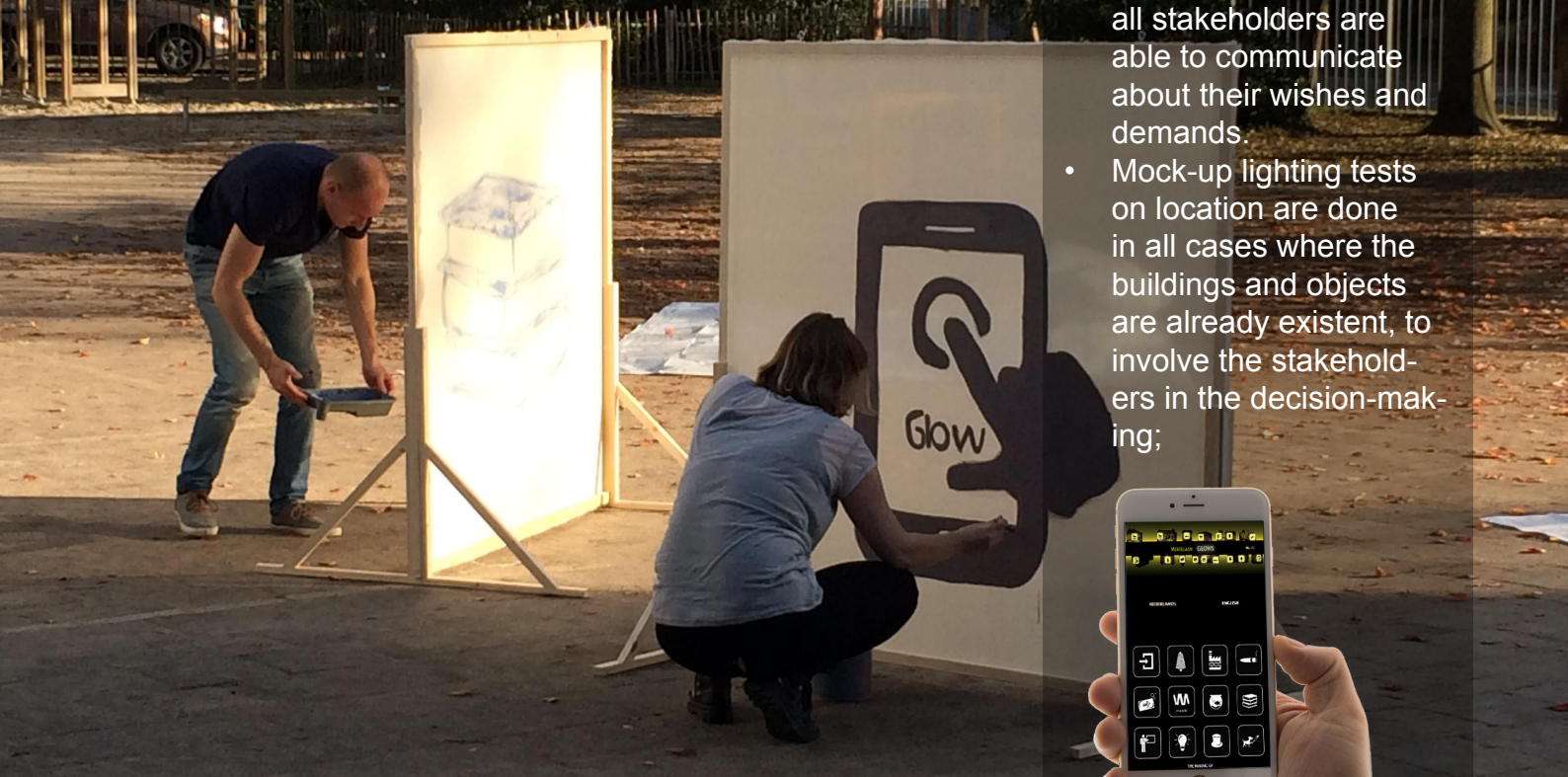


- **Lighting the cityscape**
- **Location:** Rotterdam, Netherlands
- **Site:** Different locations in the city centre of Rotterdam
- **Program:** Creating more coherence and atmosphere in the nightscape on the 'City Axis' and surrounding areas.
- **Client:** Municipality of Rotterdam
- **Project design:** 2009 - 2016
- **Execution:** 2011-2016





- By a transparent choice-making process all stakeholders are able to communicate about their wishes and demands.



- Mock-up lighting tests on location are done in all cases where the buildings and objects are already existent, to involve the stakeholders in the decision-making;



- A special mobile app has been developed for the GLOW festival to enhance interaction with visitors